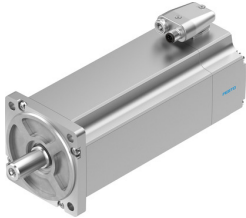


Servo motor EMME-AS-100-SK-HS-AMXB

Part number: 4267599

FESTO



Data sheet

Feature	Value
Type code	EMME-AS
Ambient temperature	-10 °C ... 40 °C
Storage temperature	-20 °C ... 70 °C
Relative air humidity	0 - 90 %
Conforms to standard	IEC 60034
Insulation protection class	F
Rating class according to EN 60034-1	S1
Degree of protection	IP21
Featherkey shaft design	DIN 6885 A 6 x 6 x 32
Electrical connection technology	Plug
Note on materials	RoHS-compliant
Corrosion resistance class (CRC)	0 - No corrosion stress
LABS conformity	VDMA24364 zone III
Certification	RCM compliance mark c UL us - Recognized (OL)
CE marking (see declaration of conformity)	As per EU EMC directive As per EU low voltage directive
Nominal operating voltage DC	565 V
DC nominal voltage	565 V
Type of winding switch	Star inside
Number of pole pairs	3
Stall torque	5.6 Nm
Nominal torque	4.8 Nm
Peak torque	22.4 Nm
Nominal rotary speed	3000 1/min
Max. rotational speed	3910 1/min
Motor nominal power	1500 W
Continuous stall current	3.4 A
Motor nominal current	3 A
Peak current	13.6 A
Motor constants	1.6 Nm/A
Voltage constant, phase-to-phase	102.2 mVmin
Phase-phase winding resistance	4.6 Ohm
Winding inductance phase-phase	15.5 mH
Total output inertia moment	5.63 kgcm ²

Feature	Value
Product weight	7250 g
Permissible axial shaft load	130 N
Permissible radial shaft load	650 N
Rotor position sensor	Safety encoder, absolute multi-turn
Rotor position sensor interface	HIPERFACE®
Rotor position sensor measuring principle	Optical
Rotor position encoder, sinusoidal/cosinusoidal periods per revolution	128
Typical rotor position sensor resolution	15 bit
Rotor position encoder, typical angular accuracy	20 arcmin
Brake holding torque	9 Nm
Brake DC operating voltage	24 V
Brake power consumption	18 W
Brake mass moment of inertia	0.654 kgcm ²
Switching cycles, holding brake	5 million idle actuations (without friction work!)
Safety Integrity Level (SIL), subcomponent	SIL 2, rotor position sensor SILCL 2, rotor position sensor
Performance Level (PL), subcomponent	Category 3, performance level d, rotor position encoder
PFHd, subcomponent	1.3 x 10E-8, rotor position sensor
Duration of use Tm, subcomponent	20 years, rotor position sensor
MTTF, subcomponent	1037 years, holding brake
MTTFd, subcomponent	874 years, rotor position sensor
Energy efficiency	ENEFF (CN) / Class 2